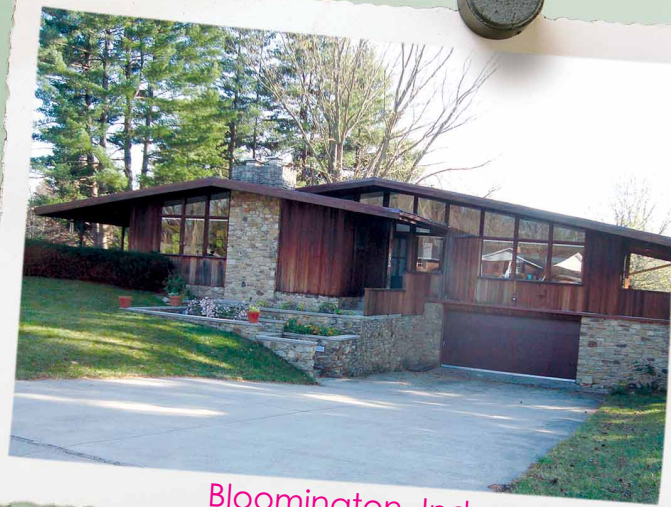
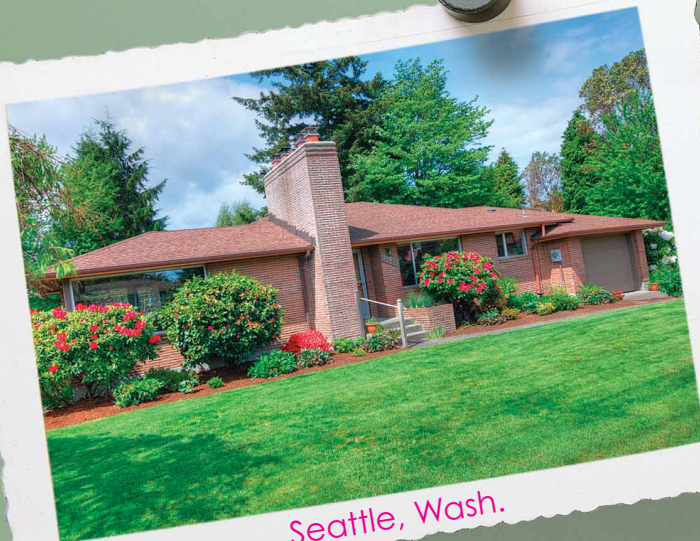




Portland, Ore.



Bloomington, Ind.



Seattle, Wash.

# homepage

## Portland, Ore.

We purchased our 1954 transitional ranch in the Kenton neighborhood in 2004. The 1,150-square-foot house sat empty for a year or so; we think it was simply waiting for us to arrive and make it our home. Most of the walls were whitewashed, but loads of character remained after removing about 600 pounds of rotten carpet and padding to expose the lovely hardwood floors. Ceilings were adorned with glittery popcorn texture, and the bathroom walls flaunted their pink pearlescent tiles. Our tiny home offers a comfortable, wide-open feeling despite its modest square footage. And the massive dogwood in our front yard is a lovely brazen spectacle in the spring—just one more reason to feel proud of our little red ranch house!

**Holly & Ed O'Leary**

## Bloomington, Ind.

When we moved into our MCM ranch two years ago, it was clear the home suffered from an identity crisis. Designed by Garlinghouse in Topeka, Kansas, in the early '60s, our home wasn't built until 1972. That 10-year gap—and poor choices by the builder—resulted in a home with classic modern elements side by side with kitschy later trends. A seller on eBay helped me locate a *Holiday Homes* catalog that features the plans and sketch for the house. We are working to remedy everything that doesn't work for the house; one thing I cannot fix is the unfortunate omission of the basement fallout shelter that was to be located under the front steps.

**Mark & Brandi Smith**

## Seattle, Wash.

I accidentally bought our house when my partner was on a three-day business trip; oops! That was in 2009 and he has since forgiven—and married—me. We love our 1953 home in West Seattle's midcentury modern Marine View neighborhood, which affords many of our neighbors sweeping Mt. Rainier and Puget Sound views. Between the prominent chimneystack and the three-sided fireplace separating the living and dining rooms, I knew this was meant to be our home. We still have work ahead of us, both inside and out. We are currently updating the landscape in phases, incorporating a number of native, drought-resistant plants. Our plans include salvaging most of the midcentury specimens, replacing portions of the lawn and creating a buffer from the street.

**Dawn Nelson & Jeremy Hale**

Show us yours; send in a high-resolution photo or sharp snapshot and a couple of sentences about your cool pad for our next issues. See contacts page 5.