

my favorite space

Welcome to a new series highlighting

readers' cherry-picked spots.



Most of the items are unsigned generic midcentury pieces, such as the hanging ashtray, the table lamp and the floor lamp from Daddy Katz in Dayton, Ohio. Similar lampshades are available from Moon Shine Lamp and Shade.

While we do not have a midcentury home, we have brought a bit of the style into the house we have. I entered into my appreciation for MCM through the world of tiki, seeing friends' homes with not only great tiki bars in them, but also fabulous '50s and '60s furnishings that made me think of my grandmother's ranch in Kalamazoo, Mich. So I started picking up midcentury pieces I liked along the way wherever I found them—in thrift and vintage stores, on eBay and at flea markets—enjoying the thrill of the hunt.

One of the first furniture pieces was the mosaic boomerang-shaped table, which led to the overall color scheme in the room. Then, when I found the turquoise sectional, blue chairs (one is still in storage) and the round pillows at an estate sale, I knew I finally had the right pieces to bring it all together. Once the couches were in place, I began bringing decorative items up from the basement.

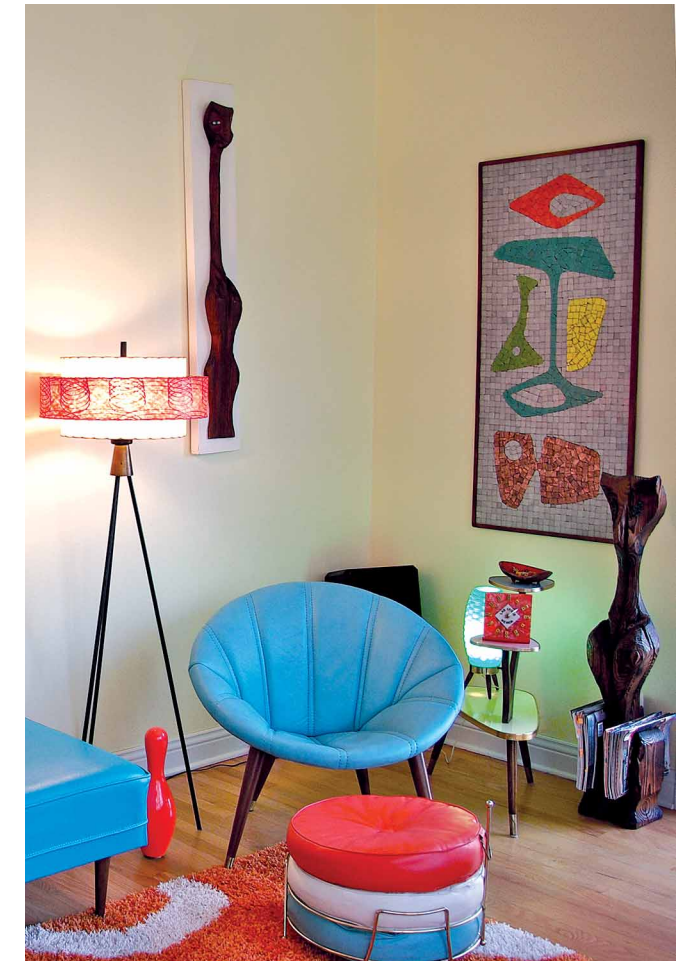
On a side note, the reason I was keeping all of this furniture in the basement was because we plan to build our own MCM-style home when we move from Wisconsin to Austin, so I was buying with that new home in mind. But the sectional would have pushed us over to needing to rent a storage space, so we decided to sell off the existing furniture and start decorating and enjoying our MCM dream home a little in advance.

I had already purchased all of the artwork and other furniture you see, including the Witco world map, the Stinchcombe '60s fish art and an unsigned mosaic from the Boomerang Room in Columbus, Ohio. We hauled it all up from the basement, and the only thing that remained to be found was a rug, which I sourced on Amazon to pull it all together. ✨

Caroline Roe
Racine, Wis.

Resources page 75

Interested in sharing your own space? Be it a Naugahyde reading nook, bitchin' Pepto-pink bathroom or basement tiki bar, share it with us at editor@atomic-ranch.com. One or two images, 250KB–1MB in size (hint: iPhone) and tell us the details.



The cat wall hanging and magazine holder are both Witco, the three-tier table under the framed mosaic was bought online from Germany and the floor pillow ottoman is unmarked.